



Fire Safety Management Policy

Committee	Trust Board
Author	Samantha Sage
Version	1.0
Approved on	30/01/2023
Signature	R Hover
New Review date	January 2024

Review Procedures

This policy will be reviewed regularly and revised as necessary. Any amendments required to be made to the policy as a result of a review will be presented to the Board of Trustees for acceptance.

Document / revision no.	Date	Status / Amendment	Approved by

Contents

Roles and Responsibilities	5
Introduction.....	5
Headteacher.....	5
Business Manager	6
Admin Team.....	6
Premises Team	7
Teachers	8
Fire Wardens	8
Students	8
Contractors	9
Arrangements.....	10
Introduction.....	10
Fire Management System.....	10
Planning.....	10
Emergency Evacuation Plan.....	11
Hirers and Extended School Providers	12
Conclusion	12
Appendix 1- Fire Management organisational Chart	13
Appendix 2 - Evacuation Procedure	14
Appendix 3 - Evacuation Drill Report Template	18
Appendix 4 - Fire Warden List.....	20
.....	20
Further Guidance	21

1. Statement of Intent

The Inspira Academy Trust's primary focus is for the safety of its students, employees and visitors, to that end the fire safety management of the school/academy is based around "life safety". To achieve this, the school/academy will ensure:

- Appropriate advice, competence and resources are provided to carry out the preventive and protective measures required by the Regulatory Reform (Fire Safety) Order.
- A suitable and sufficient fire risk assessment is completed annually or when significant changes occur.
- A management framework to support the Headteacher to fulfil the role of the Responsible Person is in place to ensure the above objectives are met.
- Appropriate information, instruction and training is provided to all staff and to people who may be affected by the school/academy activities.
- The school/academy is environment safe and promotes fire prevention at all times.

The Board of Trustees and Headteacher are ultimately the recognised responsible people. The Inspira Academy Trust as the employer is held by strict liability under the Regulatory Reform (Fire Safety) Order where the premises are to any extent under their control.

In practice responsibility for fire safety is delegated to the Headteacher who manages the school/academy and its fire safety on a day to day basis. The Headteacher has specific areas of responsibility but has delegated defined duties to support staff. Please see fire management responsibilities and the organisation chart for details.

Roles and Responsibilities

Introduction

The Headteacher is responsible for ensuring that all control measures identified in the fire risk assessment are in place and that further improvement actions are completed so far as is reasonably practicable.

The Headteacher will assign an appropriate member of his/her team the responsibility to complete each improvement action.

The premises team complete fire management tasks. This includes maintenance and testing of fire safety systems. Some of these duties are contracted to suitably qualified engineers.

Fire wardens have been designated and are suitably trained in their fire evacuation duties. Fire drills are completed once every half term. All staff receive fire safety awareness training annually.

The school/academy communications system is able to ensure that all of those involved, or potentially involved, in an incident are informed rapidly and effectively, of relevant information. In addition, the systems make use of alternative formats as necessary, with contingency plans for when systems fail.

The following are the defined responsibilities for those working within the school/academy who have been assigned specific duties:

- a) Headteacher
- b) Business Manager
- c) Admin Team
- d) Premises Team
- e) Teachers
- f) Fire Wardens

Headteacher

The Headteacher is empowered to ensure that legislative requirements are met; and that testing, maintenance or repairs are initiated as required. Such powers are supported by the necessary, sufficient and appropriate resources, including funds.

The Headteacher is responsible for ensuring:

- a) The school/academy has a fire safety management policy and that such a policy is reviewed annually
- b) That a Fire Risk Assessment is completed and reviewed annually by a competent person
- c) Staff are notified of the significant findings of the fire risk assessment
- d) Recommended actions derived from the fire risk assessment are completed
- e) The maintenance/testing of all firefighting systems and equipment are completed and recorded in the fire safety logbook
- f) That the school/academy emergency plan and evacuation procedures are regularly reviewed
- g) The school/academy has a major incident evacuation plan which may include agreements with local providers and additional training for staff

- h) All pupils, employees, visitors and others who use the building are made aware of the fire safety precautions and the fire evacuation procedures
- i) The provision of fire awareness training to all staff
- j) The provision of fire warden training for designated staff
- k) That an emergency fire drill is undertaken every term
- l) The preparation of specific personal emergency evacuation plans (PEEPs) for staff and/or pupils with special needs and/or disability
- m) The provision of suitable fire safety systems e.g. fire alarm, automatic detection and emergency lighting
- n) The provision of suitable fire safety equipment such as fire doors, fire signs and fire fighting equipment
- o) Any fire prevention officer's recommendations and or enforcement notices are complied with
- p) In instances where contractors create hazardous conditions and refuse to eliminate them or take action to make them safe, the Headteacher will take such actions as are necessary to protect the safety of school/academy staff, students and visitors
- q) All hirers and contracted users of the premises receive written details of the fire procedure as part of the hire arrangements.

The Assistant Headteachers will take on the responsibilities of the Headteacher in their absence

Business Manager

The Business Manager will assist the Headteacher to ensure:

- a) The policy is clearly communicated to all relevant persons
- b) Appropriate information on significant risks is given to visitors and contractors
- c) All staff are provided with adequate information, instruction and training on fire safety management
- d) Appropriate consultation arrangements are in place for staff
- e) Emergency procedures are in place
- f) Fire safety systems and equipment is inspected and tested to ensure they remain in a good working condition
- g) Arrangements are in place to inspect fire safety management of the premises
- h) All servicing and maintenance records are held on file, and the fire safety logbook is maintained up to date
- i) The activities of contractors are adequately monitored and controlled
- j) Hot work permits are in place where required
- k) A report to the Body of Trustees on the performance of fire safety management within the school/academy.

Admin Team

Admin Team is responsible for:

- a) Ensuring that classroom registers are always available and are taken to the assembly point in the event of an evacuation

- b) Ensuring that visitors and contractors are signed in to the building and are notified as to the evacuation procedures
- c) Where appropriate escorting visitors and contractors from the building
- d) Collecting information such as contact details of parents
- e) Taking such information to the assembly point for use in a major incident/site evacuation.
- f) Collecting all of the area and classroom information from Teachers and Fire Wardens
- g) Controlling the assembly point
- h) Ensuring that fire and rescue service access gates are opened
- i) During a practice, noting escape times and general observations for improvement
- j) Liaising with the fire and rescue service to ensure that all relevant information is communicated effectively
- k) Providing the fire and rescue service with a detailed (laminated) plan of the building
- l) Ensuring that no one re-enters the building until deemed safe to do so by the fire and rescue service
- m) Implementing the major incident site evacuation plan if required.

Premises Team

The Premises Team are responsible for controlling work, maintaining safety systems and maintenance. A system has been developed proactively with clear lines of responsibility; a permit system; logging and audit processes and routine checking and supervision.

The maintenance system is one where there is dynamic monitoring of the fire safety systems, and the equipment is kept fully functional at all times when the building is in use.

The Premises Team are responsible for:

- a) Calling the fire and rescue service to ensure that they have been notified of the alarm
- b) The formal maintenance and regular testing of the fire alarm system
- c) The formal maintenance and regular testing of the emergency lighting
- d) The maintenance and inspection of the fire fighting equipment
- e) The maintenance of exit/escape routes and signage
- f) The completion and upkeep of the school/academy fire safety logbook
- g) Supervision of contractors undertaking work within the premises, including hot work
- h) Ensuring that fire compartmentation is sound and that any fire engineering solutions are suitably maintained
- i) Reporting any hazards (which cannot be dealt with) to the Headteacher
- j) Ensuring that access can be gained at all times to the electric and gas shut off devices
- k) Ensuring that fire critical plant such as gas boilers are annually serviced in line with the school/academy's planned preventative maintenance regime
- l) Ensuring that electrical equipment is suitably maintained and that fixed electrical wiring is inspected at least every five years in line with the planned preventative maintenance regime
- m) Ensuring that firefighter equipment is maintained and accessible, e.g. fire hydrants and dry risers.

Teachers

Teachers are responsible for:

- a) Acting as fire wardens when evacuating their class from the school/academy
- b) Ensuring that their particular classrooms are kept free of hazards which may block escape routes
- c) Ensuring that all electrical equipment used within the classroom have been suitably maintained
- d) Reporting any hazards (which cannot be dealt with) to the Premises Team
- e) Ensuring that new pupils are suitably trained in evacuation procedures
- f) Ensuring that pupils who attend class with a prohibitive injury are assessed and that a personal emergency evacuation plan (PEEP) is put in place
- g) Following school/academy evacuation procedures including reporting to the head fire warden with the results of the register check
- h) Controlling their class at the assembly point, ensuring that no pupil re-enters the building until the head fire warden announces that the school/academy is safe or leaves the school/academy premises
- i) If required, be aware and trained in the major incident evacuation plan which may require escorting the class away from the premises to a safe site
- j) Taking part in any fire safety training provided by the school/academy.

Fire Wardens

The Fire Wardens / Support Staff (given responsibility) are responsible for:

- a) Ensuring that their designated areas are clear before leaving the building
- b) Closing all fire doors (not on automatic closers) before leaving their area
- c) Taking an active day to day role in fire prevention and hazard spotting
- d) Reporting fire safety issues such as missing fire extinguishers
- e) Ensuring that fire escape routes/stairs and fire exits are not blocked
- f) Reporting any hazards (which cannot be dealt with) to the Premises Team
- g) Reporting to the Head fire warden at the assembly point to notify them of the occupancy status of their area
- h) Assisting the head fire warden in securing the building and ensuring that no one re-enters the premises until it is deemed safe to do so by the fire and rescue service.

Students

Students, in accordance with their age and aptitude, are expected to:

- a) Exercise personal responsibility for the safety of themselves and others
- b) Observe all the safety rules of the school/academy and in particular the instructions of staff given in an emergency
- c) Use and not wilfully misuse, neglect or interfere with equipment provided for their safety.

Contractors

Contractors are responsible for:

- a) Identify and control any risks arising from their activities and inform the Headteacher of any risks that may affect the school/academy staff, students and visitors
- b) Be aware of the fire safety management policy and emergency procedures and comply with these at all times
- c) Liaise with the premises management team and ensure any faults are reported

Arrangements

Introduction

The fire safety order specifically requires a fire risk assessment to be carried out and to be suitably reviewed. This has been completed for the premises and is reviewed annually or when there is a significant change, whichever occurs first. Significant changes include, but are not limited to:

- a) Any structural changes (alterations to the layout of the premises, erection of partitions, refurbishments, etc.) which may affect the spread of fire
- b) Any change to the use of the premises which may affect the risk rating
- c) Any change to work processes or work equipment which may introduce new fire hazards
- d) A change in the number of people using the premises to ensure that escape routes can accommodate the numbers safely.

In addition, it is expected that the school/academy will put in place a management system/policy and procedures to deal with fire safety and prevention.

The fire safety management policy sets out the objectives in respect of fire prevention and emphasises the school/academy's commitment to fire safety.

The school/academy aims to have proactive liaison with the local fire and rescue service including effective arrangements for notifying the fire and rescue service of changes to the occupancy, periods of abnormal occupancy, fire growth characteristics and other relevant factors. The arrangements allow for routine meetings with the fire and rescue service and additional meetings where a change in the building or its occupancy is proposed.

Fire Management System

There is a clear fire management system in place to ensure that the school/academy suitably manages the fire risk. The system seeks to anticipate and proactively identify the impact of any proposed changes. The management team of the school/academy identify any alternative protection and management measures that will be required as a result and ensure that they are implemented.

The staffing level provided is specifically appropriate to the fire safety requirements of a nursery/primary. It includes sufficient trained personnel to ensure that all occupants are assisted or supported, to make their way out of the building effectively in an emergency.

The training ensures that there are sufficient numbers of staff trained in all aspects of fire prevention, fire protection and evacuation procedures and able to use the appropriate extinguishing equipment (and media), to provide full coverage of the building, with provision for contingencies, sickness or holiday absences.

Planning

The implementation of corrective actions is ongoing following each risk assessment review with priority given to the highest risks. Where budget restraints delay implementation, risk management strategies will be put in place to reduce the risk.

The planning system is proactive and takes into account a wide range of possible emergencies and incidents. These are likely to include planning for logistical issues

such as the provision of shelter, communications, transport, the weather, time of day, time of the week, time of year (holidays, etc.) and traffic-related issues, as well as scenarios such as power failures or floods.

Emergency Evacuation Plan

The school/academy will ensure a suitable emergency evacuation procedure is prepared and made available to all staff. The procedure shall:

- a) Describe the responsibilities of all staff during an emergency
- b) Describe the fire alarm activation signal
- c) Describe the actions staff need to take to safely evacuate the premises
- d) Describe the responsibilities for communicating with the emergency services
- e) Describe the location of the fire assembly points
- f) Describe variations to the plan, including out of hours arrangements and school/academy events
- g) Include a copy of the means of the escape plan

The school/academy will ensure the emergency evacuation plan is reviewed following significant changes to the building's infrastructure or following significant events such as fire.

All staff, whether temporary or permanent, will have the evacuation procedure explained to them, together with information on the location of fire alarm call points, the location of the fire alarm and the location of escape routes, exits and assembly points.

The Headteacher will ensure the preparation of specific personal emergency evacuation plans (PEEPs) for staff and/or pupils with special needs and/or disability.

All persons with the responsibility of ensuring the safe evacuation of staff and/or pupils with special needs and/or disabilities will be made aware of the personal emergency evacuation plans (PEEPs) in place.

The Headteacher will ensure parents are consulted during the preparation of the personal emergency evacuation plan (PEEP) for their child.

All personal emergency evacuation plans (PEEPs) will be reviewed following significant changes to the infrastructure of the building, following substantial events such as fire or changes to the user's individual needs.

The Headteacher will ensure emergency evacuation equipment is available and suitable for the user. Emergency evacuation equipment will be maintained in accordance with the manufactures recommendations. All staff required to assist the evacuation of staff and/or pupils with special needs and/or disability are suitably trained in the use of equipment.

The school/academy will ensure evacuation drills are completed on a termly basis and records maintained within the fire safety logbook.

Following the completion of the evacuation drill, the Business Manager will complete an evacuation drill report. The report will detail:

- a) Log all details of the fire drill, including how the evacuation drill went and any inappropriate actions or problems which were noted as a result
- b) Fire wardens present during the drill

An evacuation drill report template can be found in Appendix 3 of this policy.

The Business Manager will carry out a debrief to all fire wardens on the significant findings, including any improvements which are to be made during an evacuation.

A copy of the emergency evacuation plan can be found in Appendix 2 of the policy.

Hirers and Extended School Providers

All hirers and contracted users of the premises will receive written details of the fire procedure as part of the hire arrangements. Hirers of the building are required to adhere to the fire procedures at all times and take such measures as are necessary to ensure the safety of those children/persons for whom they have responsibility.

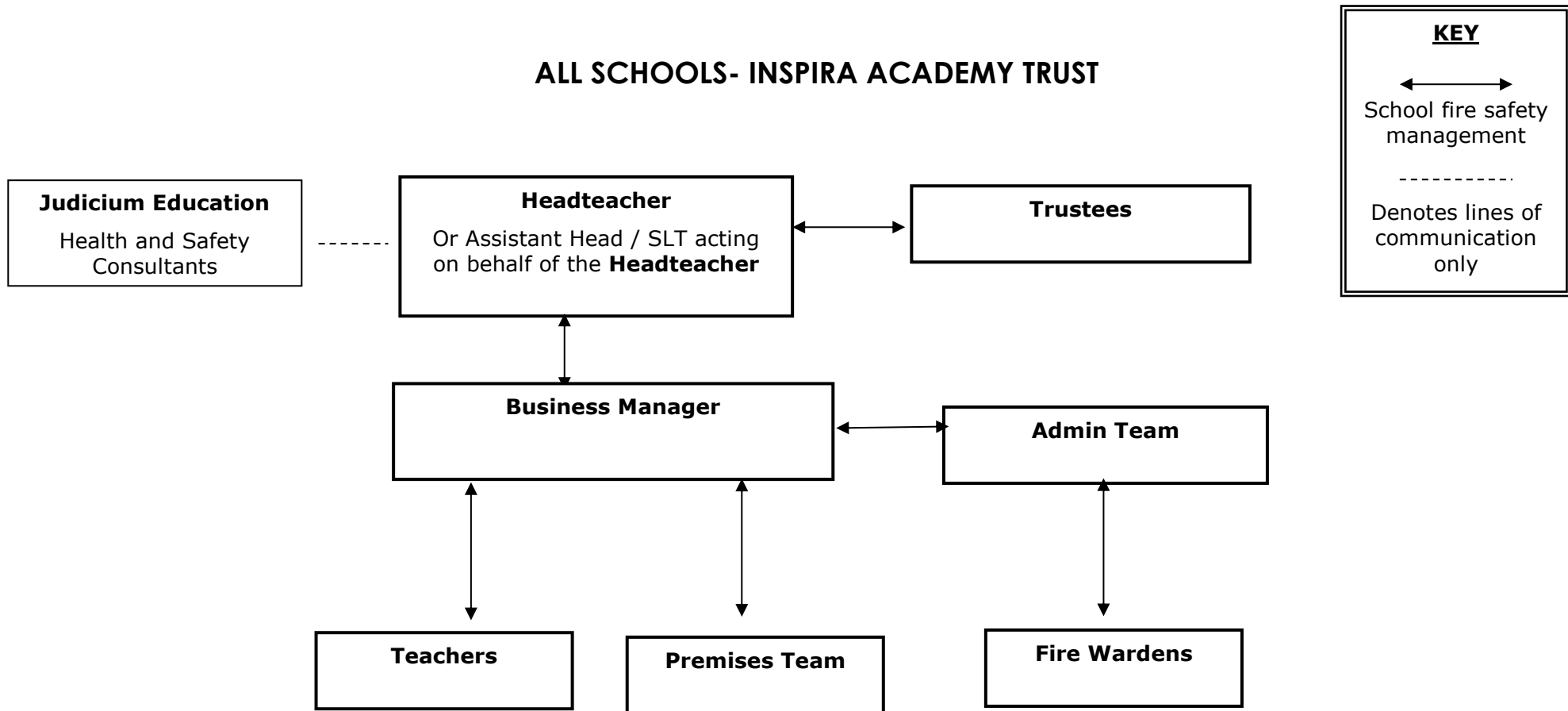
Conclusion

The fire safety management policy reflects the school/academy's serious intent to accept its responsibilities in all matters relating to fire safety. The clear lines of responsibility and organisation describe the arrangements which are in place to implement all aspects of this policy.



Appendix 1- Fire Management organisational Chart

ALL SCHOOLS- INSPIRA ACADEMY TRUST



Appendix 2 - Evacuation Procedure

Emergency Evacuation Plan Inspira Academy Trust

Academy address and contact number	<i>Inspira Academy Trust Shalmsford Street Canterbury Kent CT4 7QN T: 01227 738225</i>
Plan date	<i>20/01/2023</i>
Review date	<i>20/01/2024</i>

Fire Alarm Information

The fire alarm panel is an addressable system located to the reception. Automatic detection is located to;

- Classrooms*
- Escape routes*
- School kitchen*
- Staffroom*
- Main plant room*

The alarm sound is a continuous warning siren.

Raising the alarm

On discovering a fire, the alarm will be raised by activating the nearest call point.

Action to take on hearing the alarm

The following actions will be taken upon the fire alarm being sounded/raised:

- The Headteacher will take charge and lead in the fire evacuation. In the event of the Headteacher absent, the Assistant Head or School Business Manager will take the lead.*
- The Headteacher will dial 999 and request attendance by the Fire Service and give their name, name of the building, building address (as detailed above), contact number and details of fire*

Fire Safety Management Policy – **Inspira Academy Trust**

- Reception staff will pick up visitors signing in book and Evacuation Report from the reception desk
- Teaching staff will begin evacuation of the students – ensuring this is done in a calm and orderly manner providing assistance to those needing additional help in evacuating
- Separate 'Personal emergency evacuation plans (PEEPs)' are in place for staff and students with additional needs
- Fire wardens to sweep the areas of their responsibility to ensure all areas are clear if safe to do so and ensure all doors are closed on the way out
- If safe to do, electrical mains and gas supplies should be switched off before leaving the building. The location of these are detailed below
- The Headteacher will ensure nobody re-enters the building until confirmed safe to do so by the Fire Service
- Meet at assembly point (playground) and check all persons are account for. Roll call will be carried out by the Headteacher.
- The Headteacher will liaise with Fire Service

Disabled and temporarily injured persons

Any students or members of staff with a disability will have a Personal Emergency Evacuation Plan which sets out how they will be evacuated in an emergency situation. If our visitors have a disability, we will discuss evacuation with them on arrival.

School pets and PAT-Dog

Teaching assistants are responsible for ensuring the safe evacuation of pets located within classrooms. Carry cases are located to large and heavy cages for ease of evacuation.

PAT-Dog is the responsibility of the owner. The owner **MUST** ensure the PAT-Dog is put on their lead and evacuated via the nearest exit. The PAT-Dog and their owner will remain at the assembly point.

Escape routes

The escape routes from the building are clearly signposted.

Fire assembly point

The assembly point is: Playground

Fighting fires – Extinguisher use

Fire extinguishers will only be used where:

Staff have received training and feel confident in their use

Where it is deemed safe to do so, e.g. there is a clear means of escape, fire is small

Fire Safety Management Policy – **Inspira Academy Trust**

Personal safety always takes priority and, if, in any doubt, staff should not attempt to extinguish a fire

Location of key safety hazards or other fire-related equipment

- Gas supply shut off: Gas intake
- Mains fuse box: Electrical intake
- Location of fire alarm panel: Reception

Variations to plan

Out of house arrangement:

Upon hearing the fire alarm, evacuate via the nearest exit and make your way to the assembly point. Dial 999 for the fire brigade. Do not make your way back into the building or collect personal belongings.

School events

Should an evacuation be needed during other times (after school clubs, evening events, weekend events etc.) The adults in charge of the activity are responsible for evacuating participants safely, and the fire service is called. The fire brigade MUST be made aware of any missing persons.

Hires of the building

If the premises are being used by an external body out of hours, it will be the responsibility of the person in charge to maintain all roles in ensuring participants are evacuated safely, and the fire service is called.

Evacuation procedures are made clear to the external body at the time of booking. A copy of the evacuation plan is also provided.

Back up arrangements

In the event the fire alarm system is no-operational in any way, all staff will be made aware and back up arrangement implemented. A handbell is held at the reception and will be used to inform staff of evacuation. The person locating the fire will get a message to the reception so that the

Fire Safety Management Policy – **Inspira Academy Trust**

handbell can be rung continuously throughout the premises (if safe to do so). All staff will ensure they inform staff/students as they evacuate the buildings.

Alternative arrangements will be made to cover staff absences/ leave etc. to ensure there are always a sufficient number of trained staff available on site

Responsibilities	
Review emergency procedures:	<i>Headteacher</i>
For ensuring adequate staff are on duty to carry out the evacuation plan	<i>Headteacher/Premises Manager/ Business Manager</i>
For training staff on the evacuation plan and in their roles and responsibilities	<i>Headteacher/Premises Manager/ Business Manager</i>

Appendix 3 - Evacuation Drill Report Template

Date of Report:		Completed by:	
Date of Drill:		Time of drill:	
Time taken to evacuate:			
Time taken to complete roll call:			
	Y/N N/A	Observations:	
Fire wardens reported to the assembly point and performed tasks?			
Staff & students responded to fire alarm and reported to assembly point?			
All windows and doors closed during evacuation?			
Occupants exited via nearest exit?			
Visitors / contractors / students were properly directed?			
Persons with disabilities were accounted for?			
Personal emergency evacuation plans (PEEPs) followed?			
Roll call carried out and missing persons accounted?			
Exits guarded to prevent re-entry?			
Occupants did not attempt to re-enter the building?			
Emergency grab bags collected (if safe to do so)?			
Student/staff and visitor registers collected?			
School pets, guide/therapy dogs evacuated?			

Communicated equipment used effectively, e.g. radios?		
---	--	--

Effectiveness of drill Satisfactory / Unsatisfactory	
--	--

Additional observations (Include notes that will help response, performance and management of future evacuation drills):



Appendix 4 - Fire Warden List

Chartham Primary School Fire Wardens

<p>Site Team Fire Panel</p> <ul style="list-style-type: none"> o Check fire panel for location of fire. o Investigate fire. o Call fire brigade if necessary. o Re-set fire panel afterwards. <p>EXIT VIA NEAREST AVAILABLE SAFE EXIT</p>	<p>Vicki C/Fenella/Dee Hall/Music Rm</p> <ul style="list-style-type: none"> o Check school hall including behind stage. o Check music room. o Check all toilets behind the hall. <p>EXIT VIA NEAREST</p>	<p>Kerry/Eva/Dee Office Area</p> <ul style="list-style-type: none"> o Check offices, toilets and meeting room. o Print evac register. o Take out fire register and grab bag. o Open playground gate and hold open front gate. <p>EXIT VIA NEAREST AVAILABLE SAFE EXIT</p>	<p>Cook/BF/ASC Kitchen</p> <ul style="list-style-type: none"> o Check all areas within the kitchen. o Check the canteen area. <p>EXIT VIA NEAREST AVAILABLE SAFE EXIT</p>	<p>St Nicholas School staff: Responsible for checking Apple & Cherries classrooms and the Rainbow room.</p>
<p>Sarah F/ Sony/Heather EYFS & Yr 1</p> <ul style="list-style-type: none"> o Check classrooms (Birch – Y1 outside area/ Chestnut, Ash & Beech). o Check infant toilets and reading recovery. <p>EXIT VIA NEAREST AVAILABLE SAFE EXIT</p>	<p>Teresa/Laura D Yr 2 Corridor</p> <ul style="list-style-type: none"> o Check inclusion room, classrooms (Elder/ Hazel). o Check junior toilets and long corridor/ library area to EYFS doors. o Check Butterfly room and CCTV room. <p>EXIT VIA NEAREST AVAILABLE SAFE EXIT</p>	<p>Dan/Charlotte/Jane Upper KS2</p> <ul style="list-style-type: none"> o Check classrooms (Rowan & radio room / Yew & Narnia / Willow / Sycamore / Pine & Oak). o Check Intervention Rooms. o Asst Heads Office <p>EXIT VIA NEAREST AVAILABLE SAFE EXIT</p>	<p>Wendy/Lucy YR 3, Canteen & ICT</p> <ul style="list-style-type: none"> o Check classrooms (Maple / Holly) o Check the canteen area and then inside the ICT suite. <p>EXIT VIA NEAREST AVAILABLE SAFE EXIT</p>	

Procedures for Fire Marshalls

1. On hearing alarm, marshalls should check their areas. 2. If there is a fire they should tackle the fire with small portable fire extinguishers (after training) ONLY if blocking your exit and safe to do so. 3. Leave the building as quickly as possible and report to Headteacher at muster point. **Fire marshalls will carry gate keys at all times.**

St Stephen's Infant School Fire Wardens

<p>Site Team Fire Panel</p> <ul style="list-style-type: none"> o Check fire panel for location of fire. o Investigate fire. o Call fire brigade if necessary. o Re-set fire panel afterwards. <p>EXIT VIA NEAREST AVAILABLE SAFE EXIT</p>	<p>Donna Wood Zone 1</p> <ul style="list-style-type: none"> o Print evac register. o Take out fire register and grab bag. <p>EXIT VIA NEAREST AVAILABLE SAFE EXIT</p>	<p>Cathryn Truelove Zone 2</p> <p>EXIT VIA NEAREST AVAILABLE SAFE EXIT</p>	<p>Heidi Moeller Zone 3</p> <ul style="list-style-type: none"> o Open playground gates. <p>EXIT VIA NEAREST AVAILABLE SAFE EXIT</p>	<p>Annie Collins Zone 4</p> <ul style="list-style-type: none"> o Check all areas o Close all doors. <p>EXIT VIA NEAREST AVAILABLE SAFE EXIT</p>
<p>Selena McIntyre Zone 5</p> <p>EXIT VIA NEAREST AVAILABLE SAFE EXIT</p>	<p>Alice Edgington Zone 6</p> <ul style="list-style-type: none"> o Head Marshall <p>EXIT VIA NEAREST AVAILABLE SAFE EXIT</p>	<p>Kitchen Staff Zone 7</p> <ul style="list-style-type: none"> o Check all areas within the kitchen. o Activate emergency shutoff. <p>EXIT VIA NEAREST AVAILABLE SAFE EXIT</p>	<p>Danielle Whiteing Zone 8</p> <p>EXIT VIA NEAREST AVAILABLE SAFE EXIT</p>	

Procedures for Fire Marshalls

1. On hearing alarm, marshalls should check their areas and close all doors.
2. If there is a fire they should tackle the fire with small portable fire extinguishers (after training) ONLY if blocking your exit and safe to do so.
3. Leave the building as quickly as possible and report to Headteacher at muster point. **Fire marshalls will carry gate keys at all times.**
4. If child or adult unaccounted for report to zone fire marshal, then to Head fire marshal.
5. If children are all in the hall e.g. lunch/assembly adult responsible will ensure all children exit nearest fire exit and assemble in class line on playground
6. If teacher/TA not with class at time of alarm sweep up children in area and exit through nearest fire exit to playground
7. All routes from classroom on playground to be displayed around school
8. Expectation for all children to be silent

Further Guidance

Further guidance can be obtained from organisations such as the Health and Safety Executive (HSE) or Judicium Education. The following are some examples. The H&S lead in the school/academy will keep under review to ensure links are current.

- HSE
<https://www.hse.gov.uk/>
- Education and Skills Funding Agency – Fire Safety in new and existing school buildings
<https://www.gov.uk/government/publications/fire-safety-in-new-and-existing-school-buildings/fire-safety-in-new-and-existing-school-buildings>
- National Education Union (NEU) – Fire Safety
<https://neu.org.uk/advice/fire-safety>
- National Fire Chiefs Council (NFCC)
<https://www.nationalfirechiefs.org.uk/>
- Local Fire and Rescue Service
<https://www.nationalfirechiefs.org.uk/Fire-and-Rescue-Services>

Further Resources

- HM Government Fire Safety Risk Assessment – Educational Premises
https://assets.publishing.service.gov.uk/government/uploads/system/uploads/attachment_data/file/14887/fsra-educational-premises.pdf
- CFOA (Chief Fire Officer Association) – Fire Safety in Schools
<http://www.cfoa.org.uk/download/65172&usg=AOvVaw2fwVya49L0beZPSEmwGQQ0>